

identity

Best Day Ever



TRI-CITIES
HISTORICAL
MUSEUM



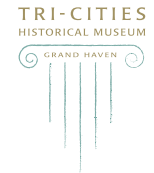
TRI-CITIES HISTORICAL
MUSEUM



TRI-CITIES HISTORICAL MUSEUM
GRAND HAVEN



TRI-CITIES HISTORICAL MUSEUM
GRAND HAVEN



TRI-CITIES
HISTORICAL MUSEUM

GRAND HAVEN

Tri-Cities Historical Museum
Concepts and Final Logo

identity

© Best Day Ever



TravelItineraries.com
Concepts and Final Logo

identity

Best Day Ever



LONGITUDE

Longitude
Tall-Specialty Retail Clothing Store

branding

Best Day Ever



CONCEPTION

Applications chosen can maximize storage. Total allows for combination of a close back and a custom green door. The choice is a standard White-Closet-White.

WHITE BOARD
WOODWORK - Shaded in the images on these pages, is a readily available hardwood product made from domestic sources since there is a sustainable, naturally sustainable resource, and a beautiful life performance.

The cabinet was custom painted in light wood color that can be matched to a variety of paints, stains, and finishes to create a wide range of custom finishes. The board also comes in light to dark finishes and is available in a range of sizes.

WOODWORK combined with the green and brown/wood/white (B&W) colors.



PARTNERSTUDIO™

AFFORDABILITY
 We believe in quality, value, and the PartnerStudio team continues the reputation of creating your best.

DESIGN
 Our vision guides the function you demand while meeting a sense of comfort in a sense of "let's get about the job."

SERVICE
 We understand that our quality-based customers, create a professional, friendly, and confident customer, always in a world to get your space in order.

Workstation	2	Product	25
PartnerStudio System	4	Custom Services & Services	25
Applications & Research	4	Accountability	25
Flexibility	14	Partners	25

WELCOME

PartnerStudio is part of an integrated team of "Self-Partner" companies that include Specialist and Manufacturing.

PartnerStudio is an exciting product creation studio, and the central focus of the studio is the user design process. This process involves the participation of users from the early first stages of the project and continues to involve users in each step of the process.

It's been five years of working with the business and design community. I have found that every project has demands that are unique. PartnerStudio responds to these needs properly. It makes your unique project even more special.

John
 PartnerStudio

branding

Best Day Ever



branding

Best Day Ever



The perfect water supply isn't here.

It's at [eSpring logo]

The perfect water supply isn't here. It's at [eSpring logo].

When you're in the mountains, you know you need clean, pure water. That's why you'll want to take your eSpring water filter with you. It's the perfect water supply for your next adventure.

When you're at home, you know you need clean, pure water. That's why you'll want to take your eSpring water filter with you. It's the perfect water supply for your next adventure.



The perfect water supply isn't here.

It's at home. [eSpring logo]

The perfect water supply isn't here. It's at home. [eSpring logo].

When you're at home, you know you need clean, pure water. That's why you'll want to take your eSpring water filter with you. It's the perfect water supply for your next adventure.

When you're in the mountains, you know you need clean, pure water. That's why you'll want to take your eSpring water filter with you. It's the perfect water supply for your next adventure.

branding

Best Day Ever



The **sharpest pencil** does not always guarantee the best value.

Sometimes our work-history processing systems send a bill more than others...**but we always deliver a lot more than you paid for.**

For instance, take our competitor's one size fits all approach. They offer a limited range of standard machines...and you figure out how to make it work for you.

Not Tani's. We tailor your model to meet the precise requirements of producing your artwork. From the get-go. Because, if the process is not right...no matter what the equipment your using...the product quality will never be there.

And if the quality is not there...the market value will not be there...and ultimately your profitability will not be there.

It's a simple premise...but it's not possible. If the system doesn't meet or exceed your requirements, we won't sell it to you. Period.

By the way...our pencil is pretty sharp too.

To learn more about what makes The Best Day Ever the most unique supplier in work-history processing...call us at 813.833.3400 or visit our website at www.thefinitygroup.com

The Best Day Ever
 10000 W. 11th Street, Suite 100
 Tampa, FL 33613
 Phone: 813.833.3400
 Fax: 813.833.3401
 Email: info@thefinitygroup.com
www.thefinitygroup.com

What a Wonderful Experience!
 Michelle Anderson, CEO
 Michelle@bestdayever.com
 813.833.3400




The **sharpest pencil** does not always guarantee the best value.

Sometimes our work-history processing systems send a bill more than others...**but we always deliver a lot more than you paid for.**

For instance, take our competitor's one size fits all approach. They offer a limited range of standard machines...and you figure out how to make it work for you.

Not Tani's. We tailor your model to meet the precise requirements of producing your artwork from the get-go. Because, if the process is not right...no matter what the equipment your using...the product quality will never be there.

And if the quality is not there...the market value will not be there...and ultimately your profitability will not be there.

It's a simple premise...but it's not possible. If the system doesn't meet or exceed your requirements, we won't sell it to you. Period.

By the way...our pencil is pretty sharp too.

To learn more about what makes The Best Day Ever the most unique supplier in work-history processing...call us at 813.833.3400 or visit our website at www.thefinitygroup.com




The **sharpest pencil** does not always guarantee the best value.

Sometimes our work-history processing systems send a bill more than others...**but we always deliver a lot more than you paid for.**

For instance, take our competitor's one size fits all approach. They offer a limited range of standard machines...and you figure out how to make it work for you.

Not Tani's. We tailor your model to meet the precise requirements of producing your artwork from the get-go. Because, if the process is not right...no matter what the equipment your using...the product quality will never be there.

And if the quality is not there...the market value will not be there...and ultimately your profitability will not be there.

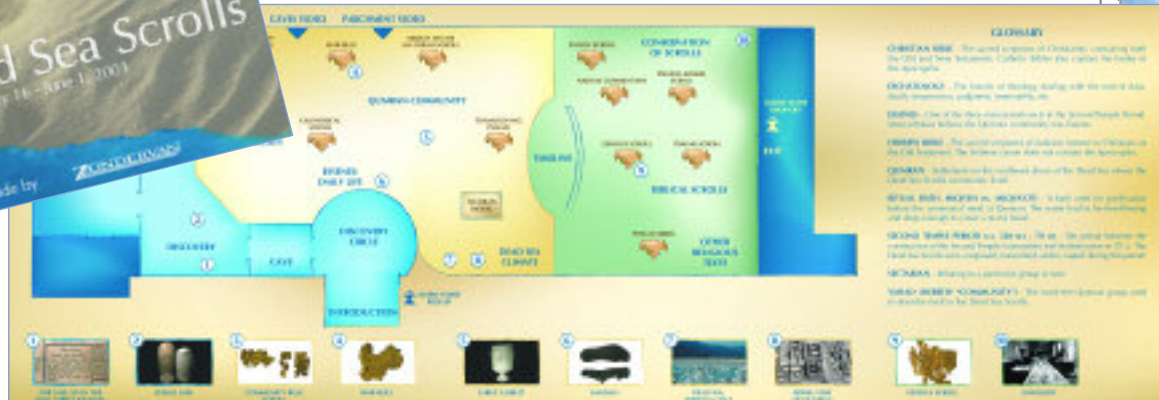
It's a simple premise...but it's not possible. If the system doesn't meet or exceed your requirements, we won't sell it to you. Period.

By the way...our pencil is pretty sharp too.

To learn more about what makes The Best Day Ever the most unique supplier in work-history processing...call us at 813.833.3400 or visit our website at www.thefinitygroup.com



Tani's for HAUS
 Ad Concepts



breeding.

Best Day Ever



Brookfield Zoo
"Wild Nights" Promotional Poster Concepts

package

Best Day Ever



Conceivex
Conception Kit, Investor Prototype

package

Best Day Ever



MEIJER

Relaxes fabric fibers, helping smooth away wrinkles.

Works on machine or line dried clothing and those packed or compressed here travel.

Helps refresh clothing only worn for a short amount of time.

WRINKLE RELEASER

NET 22 FL OZ (650 mL) AJSF-7349-82-3

The label features a blue background with a white illustration of a folded piece of fabric. On the left side, there are five circular icons: a square with a diagonal line, a square with a circle, a square with a triangle, a square with a circle, and a square with a triangle. The Meijer logo is at the top in a red banner.



MEIJER

Works effectively in all wash temperatures.

Safe for all colorfast washable fabrics.

Contains powerful stain release ingredients that penetrate fabric fibers.

Helps break down and remove even the toughest stains.

LAUNDRY STAIN REMOVER

NET 22 FL OZ (650 mL) AJSF-7349-82-3

The label features a blue background with a white illustration of a folded piece of fabric. On the left side, there are five circular icons: a square with a diagonal line, a square with a triangle, a square with a circle, a square with a triangle, and a square with a circle. The Meijer logo is at the top in a red banner.

package

Best Day Ever



package

Best Day Ever



Amway for HAUS
Satinique Hair Care

package

Rest Day Ever



Cleansing Shampoo & Conditioners



Styling



Finishing



Optional Packaging



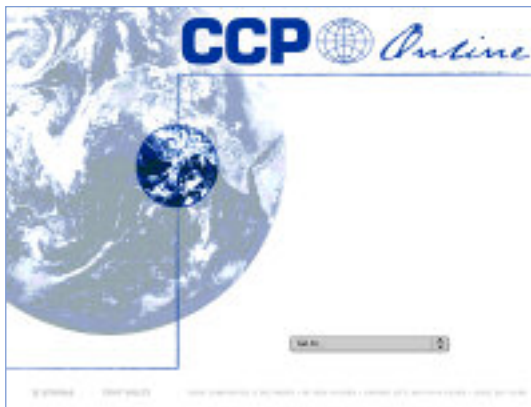
Access Business Group / Kmart
Kathy Ireland Body Series, Logo and Packaging

digital
Best Day Ever



digital

Best Day Ever



digital

Best Day Ever



Grand Valley Metro Council / REGIS
Website Redesign

digital

Best Day Ever

SHADE-RITE

LAB TECHNICIANS

- module one
- module two
- module three
- module four

DENTISTS

- module one
- module two
- module three
- module four

SHADE-RITE

SHADE-RITE

LAB TECHNICIANS

- module one
- module two
- module three
- module four

DENTISTS

- module one
- module two
- module three
- module four

SHADE-RITE

NEW LAB WORKFLOW SYSTEM

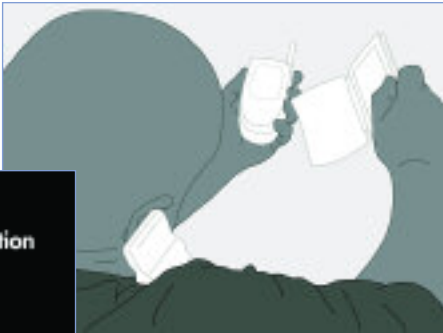
We make smiles...smoother!

digital

© Best Day Ever

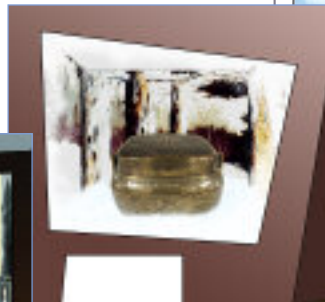
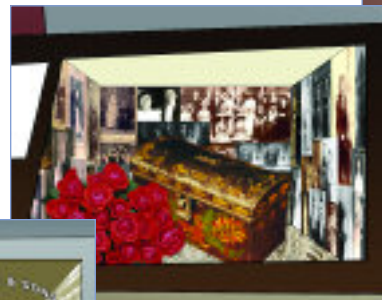
X-RiteColor® Master Web Edition

REVOLUTIONIZE Every color.
Every time.
Everywhere.



exhibit

Best Day Ever



Public Museum of Grand Rapids
"B" is for Boxes: Working Drawings

exhibit

Best Day Ever



Public Museum of Grand Rapids
"B" is for Boxes: Final Installation

exhibit

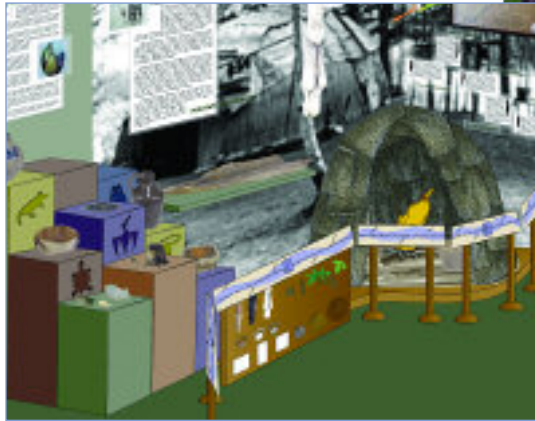
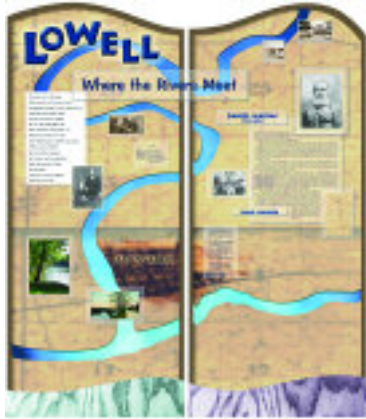
Best Day Ever



A Summer of Sports: Michigan Historical Museums
Exhibit Intro Panels

exhibit

© Best Day Ever



exhibit

Best Day Ever



Lowell Area Historical Museum
Final Installations

Best Day Ever

The ideal marriage of design + technology

Alyssa Jay Arneemann

6327 Patagonia Dr. SE
Grand Rapids, MI 49546
(616) 949-1371
alyssa@bestdayever.us

www.bestdayever.us

"The subject itself is of no account, what matters is the way it is presented." Raoul Dufy